

OWL MONKEY-CALGARY
ZOO

1144 A2

253.26 2n=49



BROOKFIELD ZOO
GENETICS 49

Owl Monkey (53) WOODLAND PARK

1213 A3

285-3376, 285-3972

2N = 53



BROOKFIELD ZOO
GENETICS

Owl Monkey - Lincoln Park Zoo

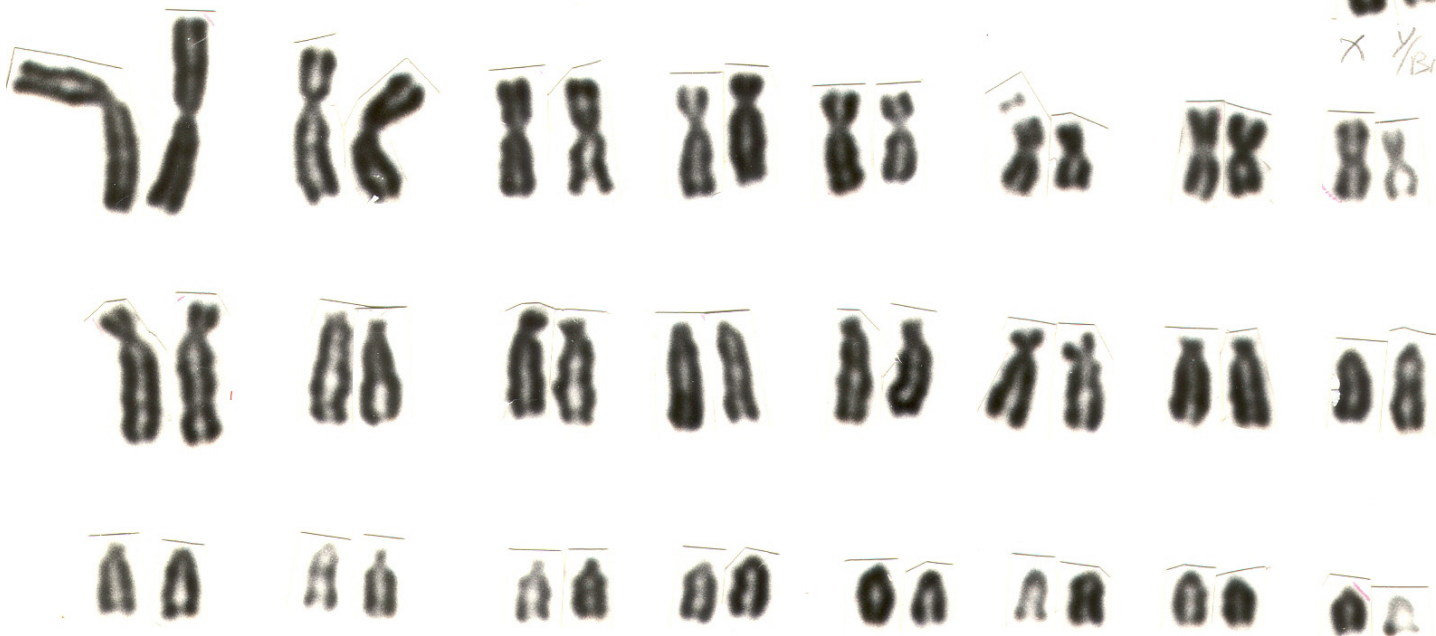
1140 A ♂

252.5

$2n = 51$ K VII

XXXX

X $\frac{Y}{B14}$ B14



BROOKFIELD ZOO
GENETICS

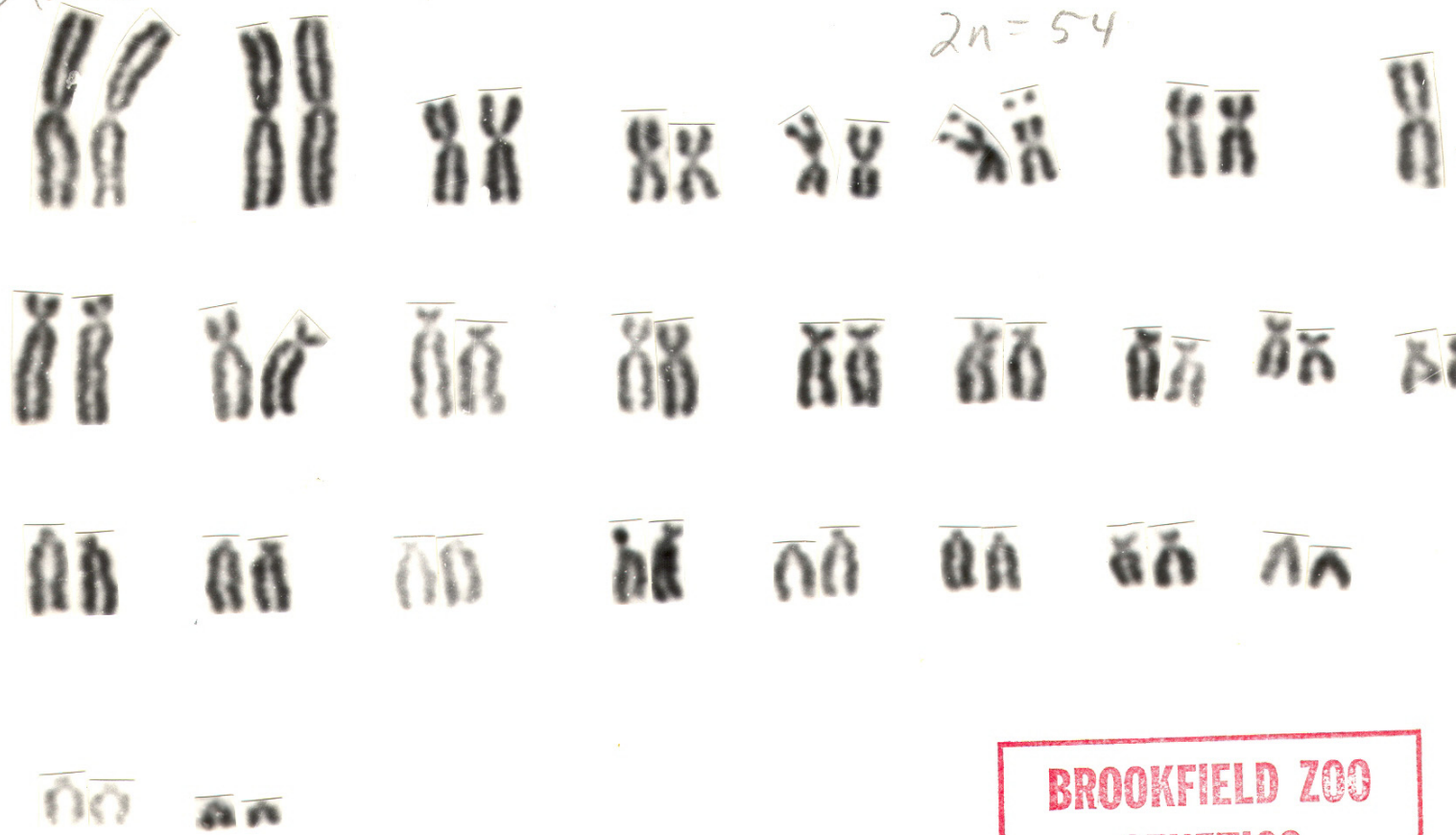
ADTUS

U of S.A.

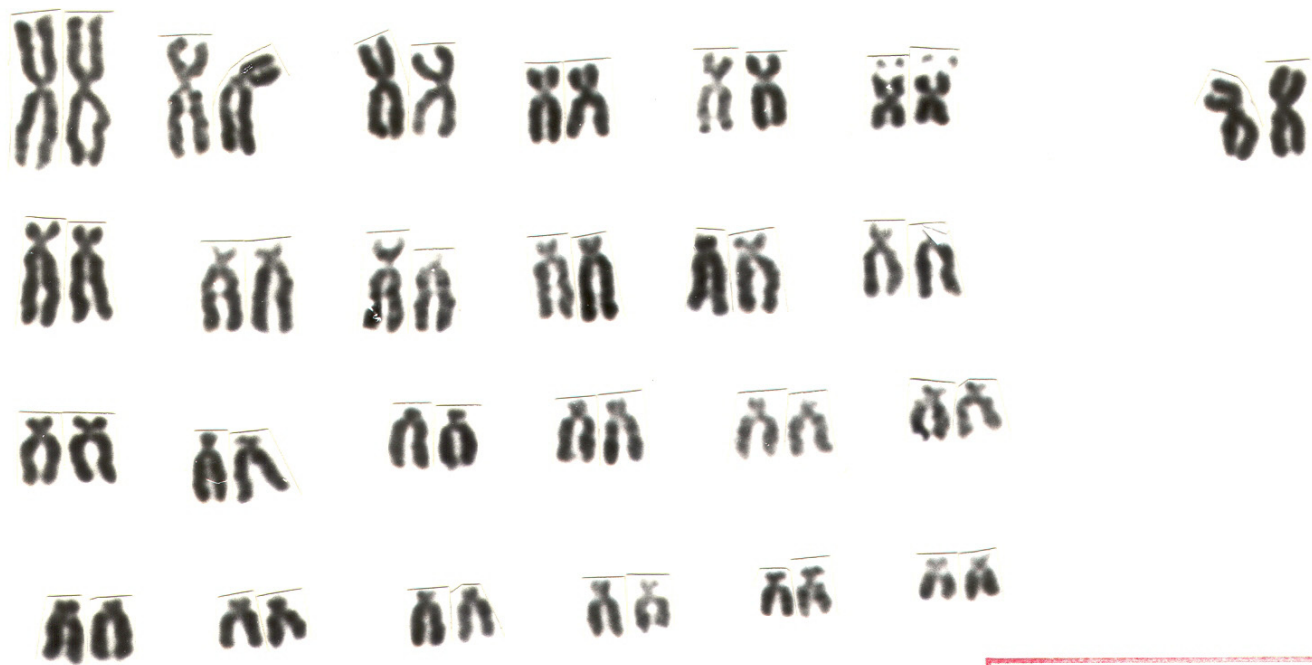
1717A1

401.36

2n = 54



**BROOKFIELD ZOO
GENETICS**



**BROCKFIELD ZOO
GENETICS**